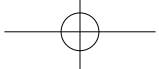


AXENT
SWITZERLAND

USER MANUAL

Intelligent Toilet
AXENT.ONE C



Thank you for placing your confidence in us.

Thank you for buying AXENT products. You can learn from this manual about the use of products and other important issues before initial start-up.

Please follow the instructions in this manual carefully.

Please keep the manual properly stored for future reference.

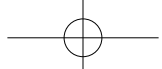
Regarding future product updates, the product is subject to change without prior notice.

Illustrations in this manual serve as visual demonstration.

We hope you can learn how to use the product through this manual.

In order to guarantee that the Product will always function optimally, and to ensure your personal safety, please do the following:

Read these operating instructions carefully before initial start-up and follow these instructions!



CONTENT

Application

What can "AXENT Remote Control" do?	4
About "AXENT Remote Control"	4

Safety	5
---------------------	---

Introduction

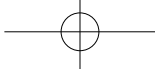
Overview	8
Main	8
Remote Control A	9
Remote Control B	10

Operation With Main

Operation Diagram	12
Flush	13
Rear Wash	13
Front Wash	14
Water Volume	14
Spray Arm Position	15
Temperature Adjustment	15
LEVEL 1	16
LEVEL 1 > Mute Setting	16
LEVEL 1 > ECO Setting	16
LEVEL 1 > Self-cleaning Setting	17
LEVEL 2	17
LEVEL 2 > Night Light Setting	17
LEVEL 2 > Deodorizer	18
LEVEL 2 > Auto Dry Setting	18
LEVEL 2 > System Reset	18
Stand-by Mode	18
Pairing to Dial	19

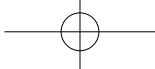
Operation With Remote Control

Opening and Closing the Seat and Lid	20
Flush	20
Rear Wash	20
Front Wash	21
Oscillating and Pulsating Shower	21
Water Volume	21
Spray Arm Position	21
Dry	22
Temperature Adjustment	22
Night Light Setting	23
Mute Setting	23
Eco Setting	23
Auto Open Setting	24
Auto Close Setting	24
Sense Area Setting	25
Auto Flush Setting	25
Deodorize Setting	26
Self-Cleaning Setting	26

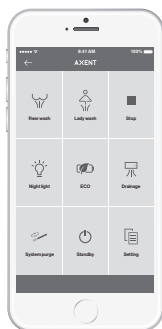


CONTENT

Auto Dry Setting	26
User Profile	27
System Reset	27
Maintenance	
Spray Arm Cleaning	28
System Purge	29
Filter Cleaning	29
During Vacation	30
Cleaning Ceramic Appliances	30
Troubleshooting	32
Dimension	35
Technical data	36
Guarantee	37



APPLICATION



WHAT CAN “AXENT REMOTE CONTROL” DO?

Installing “AXENT Remote Control” makes phone can be used like the remote control. According to your request, you can set the Volume, Position, Temperature and the running order of wash. And functions will run conform with the settings defined by the user profile custom-made by you.



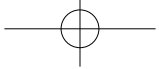
ABOUT “AXENT REMOTE CONTROL”

You can get it on Google Play Store for Android devices, or download on the App Store for iOS devices.

Also you can scan the QR code to automatically download which suit your devices

If all the ways above does not work for you, see the Download page on official website please.

www.axentbath.com » Download



SAFETY

CAREFULLY READ AND OBSERVE THE FOLLOWING SAFETY INSTRUCTIONS BEFORE USING!

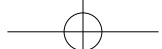
AXENT WILL NOT BEAR ANY RESPONSIBILITY FOR DAMAGE OR LOSS RESULTING FROM FAILURE TO OBSERVE THE FOLLOWING SAFETY INSTRUCTIONS.

- This device is an electric appliance of class I and must be connected to a grounding system.
- **Children and persons with insufficient knowledge or experience in handling the device, or who have limited physical, sensory or mental capabilities, may only use the device following proper instruction or when supervised. Ensure that children shall not play with the appliance.**
- The device is an electrical apparatus and thus shall not be used in a wet or humid environment. If the device is used in a bathroom, an exhaust fan or air vent shall be installed to ensure sufficient air-flow.

SYMBOLS DESCRIPTION

Symbol	Description
~	Alternating Current
≡	Direct Current
	Ground
	Tips

Symbol	Description
	Danger! High risk, lethal hazards, severe injuries
	Warning! Medium risk, severe injuries
	Caution! Low risk, minor injuries
	Note! Damage to property



SAFETY

Danger!

To reduce the risk of electrocution

- The socket circuit connected to the product must have residual current protective device with a rated residual operating current not exceeding 30mA.
- Please install the ground wire correctly in accordance with the relevant regulations of the state.
- Ensure that sockets and plugs are located at least 600 mm horizontally from the shower room or bathtub.
- Do not place or submerge the intelligent toilet or its components into water or other liquids. If it happens inadvertently, do not reach for any electrical components of the intelligent toilet. Unplug toilet immediately.
- Please unplug unit immediate and contact your dealer or call service hotline for replacement if cord becomes damaged. It must be replaced by the manufacturer, its service agent or similar qualified persons.

Warning!

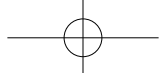
To reduce the risk of burns, electrocution, fire, or injury to persons

- Do not allow to use a loose socket.
- Do not allow to handle the power cable or plug with wet hands.
- Do not allow the power cable or plug to be optionally pulled.
- Do not allow to place open flames, candles, cigarettes, or similar objects on or by the toilet.
- Please close the seat temperature when sitting on the toilet for a long time.
- When the following people use the product, others should turn off the temperature of the seat: The child, the aged, or the person who do not know how to adjust the seat temperature; the people who have limited physical, sensory or mental capabilities, and other person without freed mobility; the person who have taken a drug (sleeping pills, Cold Remedy, etc.) that may cause drowsiness ; the people with an overdose of alcohol, exhaustion, or unconsciousness.

Caution!

To reduce the risk of malfunction or damage of product

- Do not allow to use industrial water, circulating water or waste water as the source of the product. Please use the water source that meets the standard of living and drinking.
- Do not allow the inlet-hose to be severely pinched, bent, or kinked.
- Do not allow to use harsh or abrasive cleaning substances such as abrasive cleansers, scouring powder or drain cleaner on your ceramic surfaces. Also avoid using steam cleaners and hard, abrasive sponges. The use of acidic cleaners with a pH value between 1 and 4 is highly recommended.
- Do not allow to reuse old hose-sets. Please use new hose-sets supplied with the appliance.

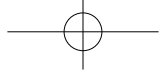


SAFETY

- Do not allow to hit against the ceramics.
- Do not allow to place the product upside down.
- Do not use radio equipment near the product.
- Do not allow to plunge into the news paper, paper diaper, sanitary napkins, etc., which are easy to block the product.
- Do not allow to make remote control contact with water.
- Disconnect the main plug before you start with cleaning the product. Please use dry cloth when cleaning the power plug.
- For cleaning do NOT use any scouring equipment (e.g. sponge scorers) tools or any aggressive cleaning agents.
- Do not install the intelligent toilet in rooms where the temperature will be less than 4 °C (39 °F).
- Do not lean on the toilet cover while using it or it may damage the cover.

INFORMATION ON THE USE OF BATTERIES

- Clean the battery and contacts before inserting the battery. Clean with wet cloth when necessary, and make sure the batteries are oriented properly after drying.
- Do not insert new and old batteries together in the remote control.
- Do not insert batteries with different chemical properties or brands, which may lead to the over discharge of the battery in use and increase the possibility of leakage.
- Do not attempt to recharge non-chargeable batteries for use with unit.
- Do not have battery in short circuit, heated, thrown into fire or disassembled.
- Do not expose the batteries to hot surfaces or direct sunlight to reduce the risk of battery leakage.
- Please discard the waste battery according to the principle of garbage classification.
- Please be sure to use alkaline batteries to reduce the risk of battery leakage.
- Remove the batteries if you do not use the remote control for an extended period to reduce the risk of battery leakage.

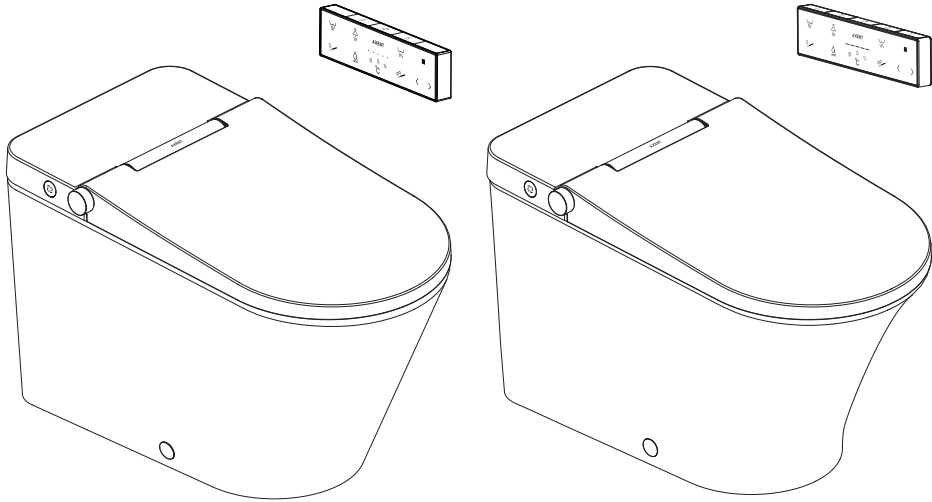


INTRODUCTION

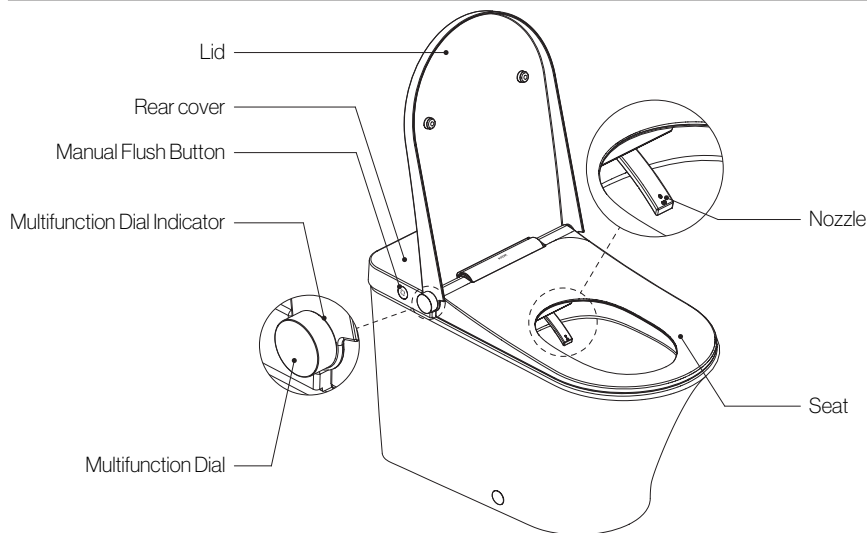
OVERVIEW

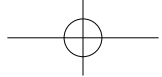
[E312-01]

[322-02]



MAIN

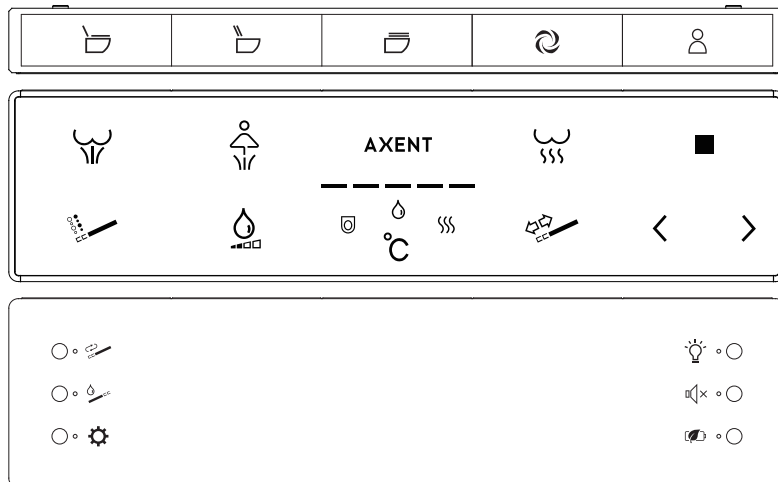




INTRODUCTION

REMOTE CONTROL A

INTERFACE



When receiving remote control command, the main unit makes the following sound:

- | | |
|------------------|------------------------------------|
| One short «beep» | effective command |
| Two short «beep» | ineffective command |
| One long «beep» | exceed the range of remote control |
- Low battery will effect the use of remote control, please charge the remote control in time.

TURN ON

It is turned off before first time use remote control.



Setting

Press «Setting» for 2 seconds to turn on remote control.

TURN OFF

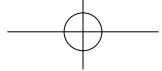


Setting



User

Press «Setting» at the same time «User» for 2 seconds to turn off remote control.



INTRODUCTION

CHARGING



Logo Indicator



Level Indicator

When the power is less than 15%, the « Logo Indicator » Light blinks which means the battery needs to be charged.

Please connect the standard charge cable to the Charge port on the remote control.

The Indicator lights indicates the battery power and all 5 lights are on when remote control is fully charged.



Don't charge remote control in moist condition.

The rechargeable Li-ion battery is built into the remote control and can't be disassembled by users.

Please contact the local dealer or call the service hot line if there is any problem.

PAIRING TO REMOTE CONTROL

It is necessary only after you replaced your remote control.

Please make sure there is sufficient power supply for the remote control before pairing.

Cut off the power of the intelligent toilet for 30 seconds and then apply power to it.

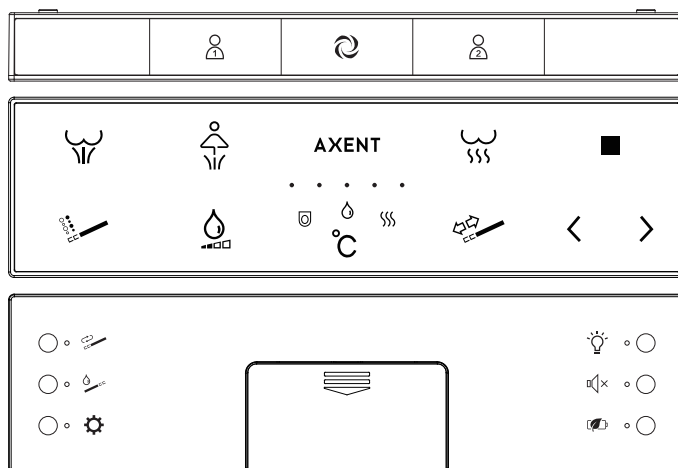


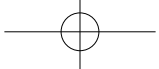
Stop

After three short «beep», start pairing by pressing « Stop » repeatedly until hearing three times long «beep» from the intelligent toilet, which means pairing successful.

REMOTE CONTROL B

INTERFACE





INTRODUCTION



When receiving remote control command, the main unit makes the following sound:

- | | |
|------------------|------------------------------------|
| One short «beep» | effective command |
| Two short «beep» | ineffective command |
| One long «beep» | exceed the range of remote control |
- Low power will reduce the effect of remote control, please replace the battery in time.

TURN ON

It is turned off before first time use remote control.

Install batteries to turn on remote control.

TURN OFF

Remove batteries to turn off remote control

CHARGING



Level Indicator

When the power is less than 15%, the « Level Indicator » blinks which means the battery needs to be replace.

Please replace batteries. And do not insert new and old batteries together.

PAIRING TO REMOTE CONTROL

It is necessary only after you replaced your remote control.

Please make sure there is sufficient power supply for the remote control before pairing.

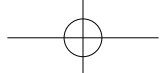
Cut off the power of the intelligent toilet for 30 seconds and then apply power to it.



Stop

After three short «beep», start pairing by pressing « Stop » repeatedly until hearing three times long «beep» from the intelligent toilet, which means pairing successful.

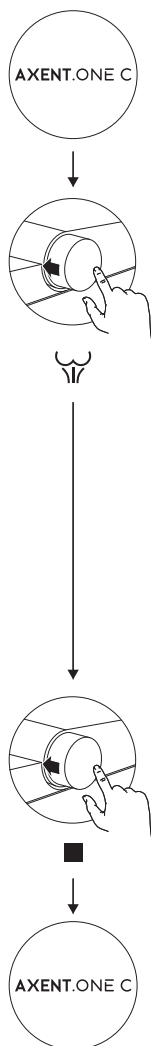
THIS MANUAL IS ILLUSTRATED WITH REMOTE CONTROL A.



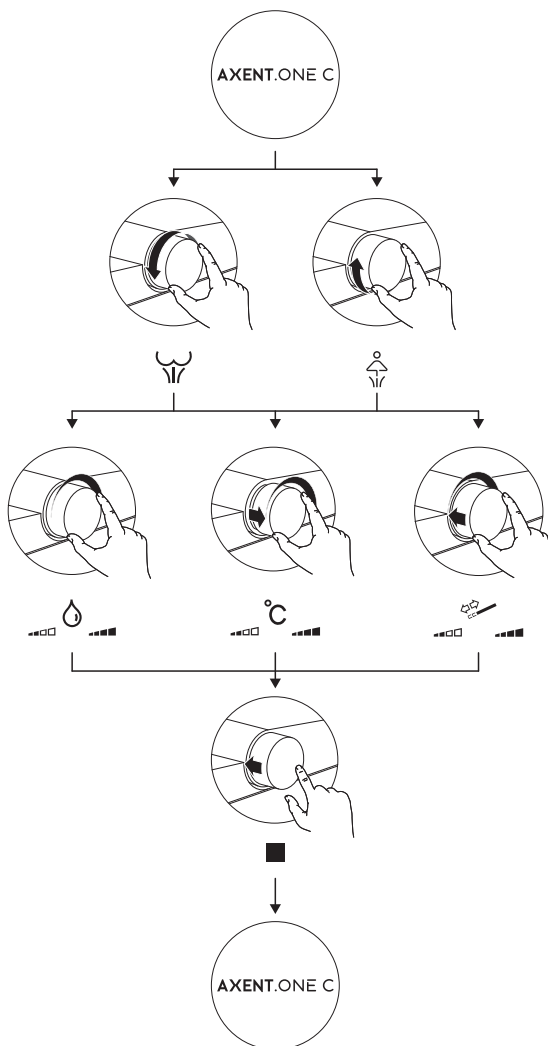
OPERATION WITH MAIN

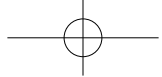
OPERATION DIAGRAM

QUICK START



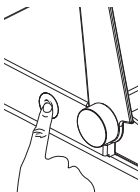
REGULAR USE





OPERATION WITH MAIN

FLUSH



Press Manual Flush Button to start.

- After being seated for more than 5 seconds, the function will be started after a period of time defined by the Auto flush setting which defaults to 15 seconds.



For Auto Flush Setting, see page 25.

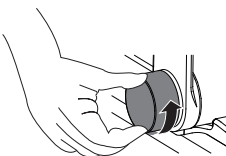
REAR WASH

After you are seated,



QUICK START

Press Multifunction Dial to start.



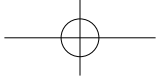
REGULAR

Turn the multifunction dial counter clockwise to start.



Press Multifunction Dial, to stop the Rear Wash immediately.

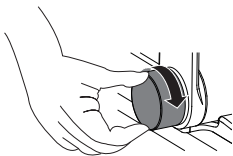
If not stopped manually the Rear Wash will stop automatically after 3 minutes.



OPERATION WITH MAIN

FRONT WASH

After you are seated,



Turn the multifunction dial clockwise to start.

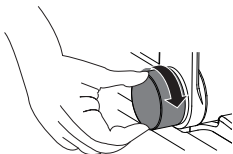


Press Multifunction Dial, to stop the Front Wash immediately.

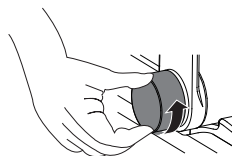
If not stopped manually the Rear Wash will stop automatically after 3 minutes.

WATER VOLUME

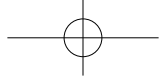
During Rear or Front Wash,



Turn the multifunction dial clockwise to reduce the water volume.



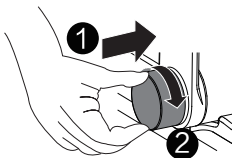
Turn the multifunction dial counter clockwise to increase the water volume.



OPERATION WITH MAIN

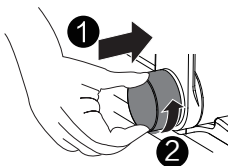
SPRAY ARM POSITION

During Rear or Front Wash,



Press and hold the multifunction dial.

Turn it clockwise to move the Spray Arm forward.

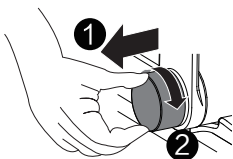


Press and hold the multifunction dial.

Turn it counter clockwise to move the Spray Arm backward.

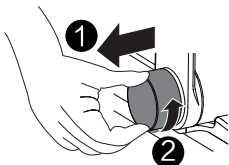
TEMPERATURE ADJUSTMENT

During Rear or Front Wash or Dry,



Pull the multifunction dial.

Turn it clockwise to increase the temperature.



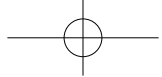
Pull the multifunction dial.

Turn it counter clockwise to reduce the temperature.



When Auto Dry setting is on, you can start the Dryer function through multifunction. Please find more about Auto Dry setting on page 18 for multifunction dial or page 26 for remote control.

When Auto Dry setting is on, press multifunction dial during Rear or Front Wash to stop washing and then activate the dryer. And you can press multifunction dial again to stop the Dry.



OPERATION WITH MAIN

LEVEL 1



Press and hold the multifunction dial until the ambient light flashes slowly to activate LEVEL 1.



Press multifunction dial to deactivate LEVEL 1.

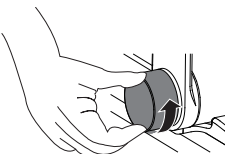
The ambient light will stop flashing and you will hear one single «beep».



If no functions are accessed in 3 minutes, LEVEL 1 will automatically deactivate.

LEVEL 1 > MUTE SETTING

Factory setting: OFF



LEVEL 1 is activated,

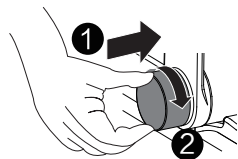
Turn the multifunction dial counter clockwise.

- ON No «beep»
- OFF Short «beep»

When the Mute is on, the system shut down all prompt sounds.

LEVEL 1 > ECO SETTING

Factory setting: ON



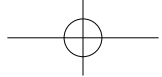
LEVEL 1 is activated,

Press and hold the multifunction dial.

Turn it clockwise.

- AUTO Short «beep»
- ON Long «beep»
- OFF Long «beep»

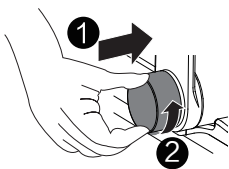
When the ECO is on, the seat will be intelligently heated according to the user's usage habits.



OPERATION WITH MAIN

LEVEL 1 > SELF-CLEANING SETTING

Factory setting: ON



LEVEL 1 is activated,
Press and hold the multifunction dial.
Turn it counter clockwise.

- ON Short «beep»
- OFF Long «beep»

As soon as you sit down on the toilet seat, the spray arm will be cleaned with fresh water.

LEVEL 2

When the multifunction dial is already in LEVEL 1,



Press and hold the multifunction dial until the ambient light flashes quickly to activate LEVEL 2.



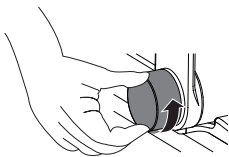
Press multifunction dial to deactivate LEVEL 2.
The ambient light will stop flashing and you will hear one single «beep».



If no functions are accessed in 3 minutes, LEVEL 2 will automatically deactivate.

LEVEL 2 > NIGHT LIGHT SETTING

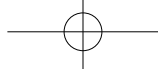
Factory setting: AUTO



LEVEL 2 is activated,
Turn the multifunction dial counter clockwise.

- AUTO Short «beep»
- ON Long «beep»
- OFF Long «beep»

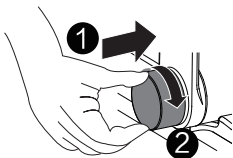
AUTO mode – The night light turns ON or OFF automatically according to ambient light levels.



OPERATION WITH MAIN

LEVEL 2 > DEODORIZER

Factory setting: ON

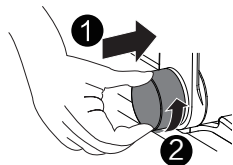


LEVEL 2 is activated,
Press and hold the multifunction dial.
Turn it clockwise.
- ON Short «beep»
- OFF Long «beep»

The deodorizer function is activated when a user is seated.

LEVEL 2 > AUTO DRY SETTING

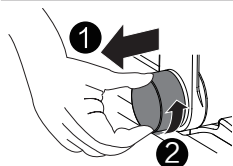
Factory setting: OFF



LEVEL 2 is activated,
Press and hold the multifunction dial.
Turn it counter clockwise.
- ON Short «beep»
- OFF Long «beep»

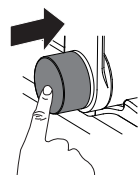
The Auto dry function is started when a user press the multifunction dial during Rear or Front Wash.

LEVEL 2 > SYSTEM RESET



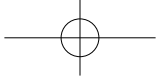
LEVEL 2 is activated,
Pull the multifunction dial.
Turn it counter clockwise to start System Reset.
- All values are reset to factory settings with a short «beep».

STAND-BY MODE



Press and hold the multifunction dial until ambient light off to activate the Stand-by mode.
- Slap the toilet rear cover to deactivate Stand-by mode.

In Stand-by mode, there is no activity for some time.



OPERATION WITH MAIN

PAIRING TO DIAL

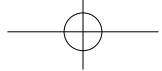
Cut off the power of the intelligent toilet for 30 seconds and then apply power to it.



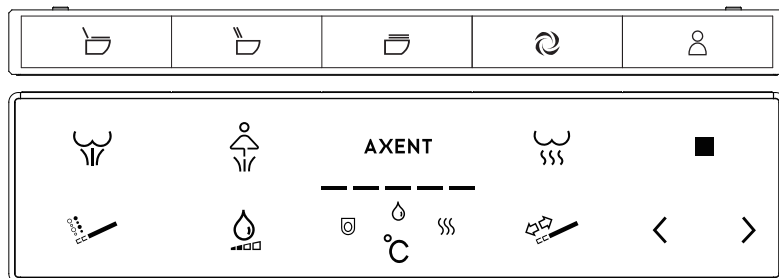
After three short «beep», start pairing by pressing multifunction dial repeatedly until hearing three times long «beep» from the intelligent toilet, which means pairing successful.



Pairing has originally been done in the factory. It is necessary only after you replaced your dial.



OPERATION WITH REMOTE CONTROL



OPENING AND CLOSING THE SEAT AND LID

For Remote Control A only



Lid

Press « Lid » when the unit is not in use to open the lid.

- When Auto Open is enabled and set to Lid, the lid will automatically open when someone approaches.



Seat

Press « Seat » when the unit is not in use to open the seat and lid.

- When Auto open is enabled and set to Seat, the lid and seat will automatically open when someone approaches.



Close

Press « Close » when the unit is not in use to close the lid and seat.

- Lid and seat will be closed automatically 2 minutes after leaving.



Auto Open only works when the lid is closed.

The seat will only open automatically after being closed for more than 10 seconds.

Please find more information about Auto Open setting on page 24.

Please find more information about Auto Close setting on page 24.

FLUSH



Flush

Press « Flush » to start.

- After being seated for more than 5 seconds, the function will be started after a period of time defined by the Auto flush setting which defaults to 15 seconds.

REAR WASH



Rear Wash

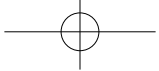
Press « Rear Wash » after you are seated to start.



Stop

Press « Stop », to stop the Rear Wash immediately.

If not stopped manually the Rear Wash will stop automatically after 3 minutes.



OPERATION WITH REMOTE CONTROL

FRONT WASH



Front Wash

Press « Front Wash » after you are seated to start.



Stop

Press « Stop », to stop the Front Wash immediately.

If not stopped manually the Front Wash will stop automatically after 3 minutes.

OSCILLATING AND PULSATING SHOWER

During Rear or Front wash,



Massage

- Press « Massage » to switch between Oscillating, Pulsating, Oscillating and Pulsating and OFF.

WATER VOLUME

During Rear or Front wash,



Water Volume

Press « Water Volume » to adjust the water volume.



Reduce

- Press « Reduce » to reduce the water volume.



Increase

- Press « Increase » to increase the water volume.



Level Indicator

« Level Indicator » indicates the selected level.

SPRAY ARM POSITION

During Rear or Front wash,



Position

Press « Position » to adjust the position of the spray arm.



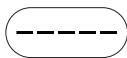
Reduce

- Press « Reduce » to move the Spray Arm backward.



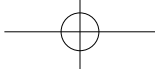
Increase

- Press « Increase » to move the Spray Arm forward.

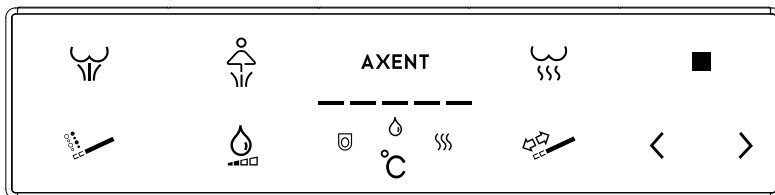


Level Indicator

« Level Indicator » indicates the selected level.



OPERATION WITH REMOTE CONTROL



DRY



Dry

Press « Dry » after you are seated to activate the dryer.



Stop

Press « Stop », to stop the dryer immediately.

If not stopped manually the dryer will stop automatically after 3 minutes.

TEMPERATURE ADJUSTMENT



Temp



Seat Temp

Press « Temp » repeatedly until the symbol « Seat Temp » lights up to activate seat temperature adjustment;



Temp



Water Temp

Or press « Temp » repeatedly during Rear and Front Wash until the symbol « Water Temp » lights up to activate water temperature adjustment;



Temp



Air Temp

Or press « Temp » repeatedly during Dry until the symbol « Air Temp » lights up to activate air temperature adjustment.

After temperature adjustment is activated,



Reduce

- Press « Reduce » to reduce the temperature.



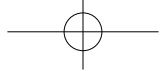
Increase

- Press « Increase » to increase the temperature.



Level Indicator

« Level Indicator » indicates the selected level.



OPERATION WITH REMOTE CONTROL



NIGHT LIGHT SETTING

Factory setting: AUTO



Light

Press « Light » to enter into the setting.

The « Light » indicator indicates the selected level.

Press « Light » to switch amount ON, OFF and AUTO.

- AUTO The indicator blinks 3 times and turns on.
- ON The indicator light remains on.
- OFF The indicator blinks for one second and turns off.

AUTO mode - Night light turn ON or OFF automatically according to ambient light levels.

MUTE SETTING

Factory setting: OFF



Mute

Press « Mute » to enter into the setting.

The « Mute » indicator indicates the selected level.

Press « Mute » to turn the function on or off.

- ON The indicator light remains on.
- OFF The indicator blinks for one second and turns off.

When the Mute is on, the system shut down all prompt sounds.

ECO SETTING

Factory setting: OFF



ECO

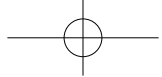
Press « ECO » to enter into the setting.

The « ECO » indicator indicates the selected level.

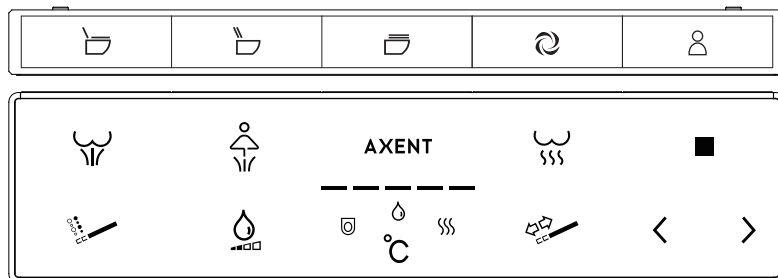
Press « ECO » to turn the function on or off.

- ON The indicator light remains on.
- OFF The indicator blinks for one second and turns off.

When the ECO on, the seat will be intelligently heated according to the user's usage habits.



OPERATION WITH REMOTE CONTROL



AUTO OPEN SETTING

For Remote Control A Only

Factory setting: Lid



Setting



Lid

Press « Setting » at the same time « Lid » to enter into the setting.



Level Indicator

« Level Indicator » indicates the selected level.



Lid

Press « Lid » to switch between OFF, Lid and Seat.

- OFF One indicator remains on.
- Lid Three indicators remains on.
- Seat Five indicators remains on.

Lid - Only lid is opened.

Seat - Lid and Seat are opened.

AUTO CLOSE SETTING

For Remote Control A Only

Factory setting: ON



Setting



Close

Press « Setting » at the same time « Close » to enter into the setting.



Level Indicator

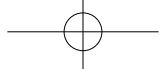
« Level Indicator » indicates the selected level.



Close

Press « Close » to turn the function on or off.

- OFF One indicator remains on.
- ON Five indicators remains on.



OPERATION WITH REMOTE CONTROL

SENSE AREA SETTING

For Remote Control A Only

Factory setting: Level 13

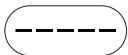


Setting



Seat

Press « Setting » and « Seat » at the same time for 2 seconds. All 3 temperature lights will light up. Each indicator corresponds to 4 distance levers, resulting in a total of 20 levels.



Level Indicator

« Level Indicator » indicates the selected level.



Reduce

- Press « Reduce » to reduce the levels of Sense Area.



Increase

- Press « Increase » to increase the levels of Sense Area.



Stop

Press « Stop » to exit the Sense Area Setting.

AUTO FLUSH SETTING

Factory setting: 15 seconds

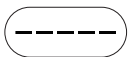


Setting



Flush

Press « Setting » at the same time « Flush » to enter into the setting.



Level Indicator

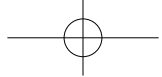
« Level Indicator » indicates the selected level.



Flush

Press « Flush » repeatedly to toggle between OFF, 5 seconds, 10 seconds, 15 seconds, 20 seconds and 25 seconds.

- | | |
|--------------|------------------------------|
| - OFF | All indicators off. |
| - 5 seconds | One indicators remains on. |
| - 10 seconds | Two indicators remains on. |
| - 15 seconds | Three indicators remains on. |
| - 20 seconds | Four indicators remains on. |
| - 25 seconds | Five indicators remains on. |



OPERATION WITH REMOTE CONTROL



DEODORIZE SETTING

Factory setting: ON



Setting



Mute

Press « Setting » at the same time « Mute » to enter into the setting.

The « Mute » indicator indicates the selected level.

Press « Mute » to turn the function on or off.

- ON The indicator light remains on.
- OFF The indicator blinks for one second and turns off.

The deodorizer function is activated when a user is seated.

SELF-CLEANING SETTING

Factory setting: ON



Setting



ECO

Press « Setting » at the same time « ECO » to enter into the setting.

The « ECO » indicator indicates the selected level.

Press « ECO » to turn the function on or off.

- ON The indicator light remains on.
- OFF The indicator blinks for one second and turns off.

As soon as you sit down on the toilet seat, the spray arm will be cleaned with fresh water.

AUTO DRY SETTING

Factory setting: OFF



Setting

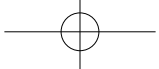


ECO

Press « Setting » at the same time « ECO » for 2 seconds to turn the function on or off.

- ON The indicator blinks 3 times and turns on.
- OFF The indicator blinks 3 times and turns off.

The Auto dry function is started when a user press the multifunction dial during Rear or Front Wash.



OPERATION WITH REMOTE CONTROL

USER PROFILE



User

Remote Control A: Press « User » to switch between different user profiles.



User 1



User 2

Remote Control B: Press « User 1 » or « User 2 » to select user profile.



Level Indicator

« Level Indicator » indicates the selected user profile.

Functions will automatically revert to settings defined by the user. Changes to the user's settings will be saved automatically when the user profile is active.

You will exit the user profile after activating the stand-by mode of the remote control for a moment.

SYSTEM RESET

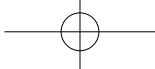


ECO

Turn off remote control.

Press and hold on « ECO » until turn on remote control start System Reset.

- All values of both main and remote control are reset to factory settings.



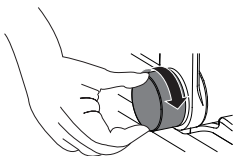
MAINTENANCE

SPRAY ARM CLEANING

When the unit is not in use,

OPERATION WITH THE MULTIFUNCTION DIAL

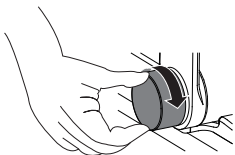
LEVEL 2 is activated (see page 17 for operation),



Turn the multifunction dial counter clockwise to extend the spray arm for cleaning.



Clean the spray arm with a fabric or a soft bristle brush.



Turn the multifunction dial counter clockwise again to retract the spray arm.

OPERATION WITH THE REMOTE CONTROL



Press « Descal » to extend the spray arm for cleaning.



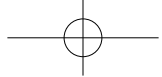
Clean the spray arm with a fabric or a soft bristle brush.



Press « Stop » to retract the spray arm.



If no other functions are used, the spray arm will automatically retract after 3 minutes.

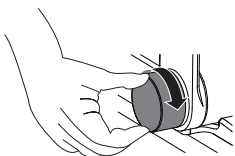


MAINTENANCE

SYSTEM PURGE

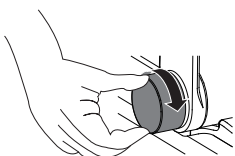
OPERATION WITH THE MULTIFUNCTION DIAL

LEVEL 1 is activated (see page 16 for operation),



Turn the multifunction dial counter clockwise to start System Purge with one «beep».

- The system purge process stops after 90 seconds automatically.



Turn the multifunction dial counter clockwise again to stop system purge immediately.

OPERATION WITH THE REMOTE CONTROL



System
Purge

Press «System Purge» to start System Purge with one «beep».

- The system purge process stops after 90 seconds automatically.



Stop

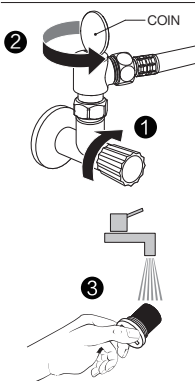
Press «Stop» to stop system purge immediately.



After a long period of inactivity, the water inside of the unit can be purged and replaced with fresh water.

It is normal that water run out from inside Baffle when system purge running.

FILTER CLEANING



The filter screen will need to be cleaned occasionally. If the unit does not fill up properly, starts to lose pressure, or does not function normally, please clean the filter first.



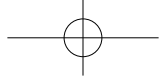
DO NOT use the product without the filter. Otherwise the product may not be warranty

When the water flow is less than normal, please clean the filter.

Note that during the entire filter cleaning process:

- The angle valve is shut off.
- The product is disconnected from the water line.

The filter may be reinserted in reverse.



MAINTENANCE

DURING VACATION

If this product will not be in use for an extended period of time, please perform the following in this order.

- Disconnect the electrical power.
- Shut off the angle valve.

WINTERIZATION

Please ensure water temperatures will not drop below 4 °C (39 °F). Frost or frozen water will damage the system and may lead to leakage.

If the water or ambient temperature drops below 4 °C (39 °F), please discontinue use of product.

- Disconnect the electrical power.
- Shut off the angle valve.
- Discharge the side on the angle valve of the hose-set and empty the hose-set.
- Press the Manual Flush Button.



FAILURE TO DRAIN SYSTEM MAY RESULT IN DAMAGE TO SYSTEM AND LEAKAGE OR FLOODING.

If the intelligent toilet is moved from a cold location to a warm location, condensation may form. Leave the unit switched off for a few hours before use.

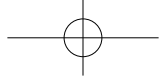
CLEANING CERAMIC APPLIANCES



DISCONNECT THE MAIN PLUG BEFORE YOU START WITH CLEANING THE PRODUCT.

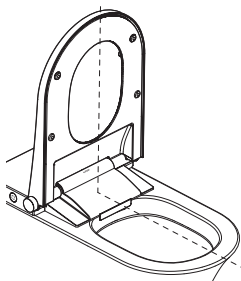
Use a mild soap solution to clean the seat. Please take care that the seat and hinges are not left damp. Dry off any residual water or cleaning agent with a soft cloth. Ensure that the seat and seat hinges do not come in contact with abrasive, corrosive, or chlorine-based cleaners, as these may cause damage or lead to flash rust. When cleaning the bowl, make sure that the seat and cover are kept in an upright position until all cleaning agent has been flushed away.

The toilet seat and lid can be removed, cleaned and remounted quickly and easily when heavily soiled.

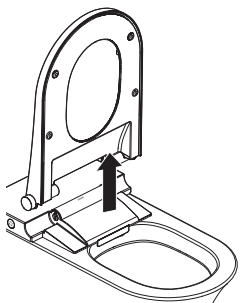


MAINTENANCE

UNINSTALLING AND INSTALLING THE LID AND SEAT

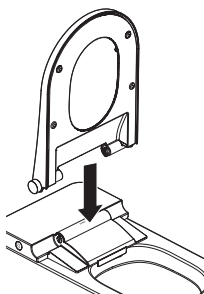


Lift up the toilet seat and toilet lid.

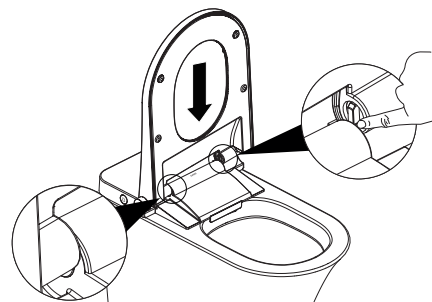


Remove the toilet seat and toilet lid by vertical lifting them out of the bracket.

INSTALLING THE LID AND SEAT



Insert the toilet seat and toilet lid vertically from the top into the bracket in the same way as removed.



Connect near dial side of the rotor to main.
Push the clip in the other side.
Let the toilet seat and toilet lid glide down.



TROUBLESHOOTING

In case of minor malfunctions, please refer to the following solutions. If the below solutions do not resolve the issue, please contact customer support for further examination and repair.



In case of water leakage, please shut off the angle valve and cut off the power at the same time.

PLEASE REVIEW THE FOLLOWING TO DETERMINE IF IT IS MALFUNCTION.

Check the Power Supply

- If the power supply could work normally

Check Water Supply

- If the water supply could work normal
- If the angle valve is shut off

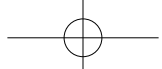
IN CASE OF THE FOLLOWING PHENOMENA, PLEASE CUT OFF THE POWER IMMEDIATELY.

Hearing continuous « beep ».

MALFUNCTION CAUSE

SOLUTION

MAIN		
No function	Product in Stand-by mode	Slap the toilet rear cover to deactivate Stand-by mode.
REMOTE CONTROL A		
Does not work	Battery is low	Recharge battery.
	Remote control turned off	Press « Setting » for 2 seconds to turn on.
Logo Indicator flash	Battery is low	Recharge battery.
Remote control works but does not control toilet	Existing distractions	Remove distractions.
	Out of range	Please use the remote control within the inductive distance.
REMOTE CONTROL B		
Does not work	Battery is low	Replace batteries.
	Wrong oriented	Reinstall batteries with correct oriented.
Level Indicator flash	Battery is low	Replace batteries.
Remote control works but does not control toilet	Existing distractions	Remove distractions.
	Out of range	Please use the remote control within the inductive distance.



TROUBLESHOOTING

MALFUNCTION CAUSE SOLUTION

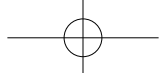
REAR WASH AND FRONT WASH		
Spray arm extend too slowly	Self-cleaning before used	Please be patient.
Low water pressure	Filter is blocked	Clean filter.
	Connection loose	Check connection between hose and main, and tighten it.
Low water temperature	Water temperature set too low	Increase water temperature.
Water stop suddenly	Leaving the seat During Rear or Front washing	Seated and restart the washing.
Spray arm extend without water spraying out	Seat does not sense person	Reconfirm position on seat.
Instable water temperature	Water pressure overload	Turn angle-valve clockwise to reduce water pressure.
DRY		
Dryer does not work	Seat does not sense person	Reconfirm position on seat.
Low air temperature	Air temperature set too low	Increase air temperature.
No air temperature	Air temperature set off	Increase air temperature.
MESSAGE		
Does not work	Can only be activated during the wash cycle	Restart massage during Front or Rear wash.
SEAT HEATER		
Low seat temperature	Seat temperature set too low	Increase seat temperature.
Low seat temperature when initially seated	Eco mode is on	Please turn off ECO.
Seat temperature reduce automatically	Seat Low TEM Protection will be activated automatically after Seated for a while	It is normal. Please adjust Seat temperature or reseated to disable Seat Low TEM Protection. And Seat Low TEM Protection will be activated again after 5 minutes.
High seat temperature	Seat temperature set too high	Reduce seat temperature.
Seat heater does not work	Seat temperature set too low	Increase seat temperature.
	Heating error	Disconnect the main plug and contact customer service.



TROUBLESHOOTING

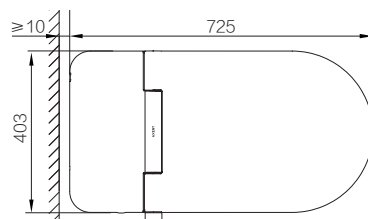
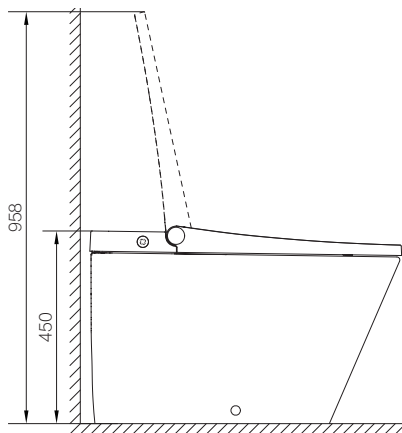
MALFUNCTION CAUSE SOLUTION

OPENING AND CLOSING THE SEAT AND LID		
Seat will not open automatically	The product does not have this function	Please check if your product have this function.
	Auto open off	Set auto open as Lid or Seat.
	Lid not closed	Close lid.
	Less than 10 seconds after last Auto Close	Wait for 10 seconds after last Auto Close.
Auto Close does not work	The user still moving within the inductive distance	Leave the inductive distance or be static for 2 minutes.
Seat heater does not work	Auto open set as Lid	Set Auto Open as Seat.
	Less than 10 seconds after last Auto Close	Wait for 10 seconds after last Auto Close.
DEODORIZE		
Deodorizer does not work	Deodorize off	Please turn on Deodorize.
	Seat does not sense person	Reconfirm position on seat.
	During Rear or Front wash	It is normal. Deodorize is disable During Rear or Front wash.
Deodorizer still runs after leaving seat	The deodorizer continues to run for 60 seconds after leaving the seat to increase effectiveness	This is normal.
NIGHT LIGHT		
Does not work	Night light in OFF mode	Switch night light setting to ON or AUTO mode.
Night light always on	Night light in ON mode	Switch night light setting to AUTO or OFF mode.
SELF-CLEANING		
Spray arm retracts automatically during Descal process	Wand will automatically retract after 3 minutes of inactivity	Restart Self-cleaning again.
WARNING		
Continuous « beep »	Water temperature exceeds normal range	Disconnect the main plug and contact customer service.

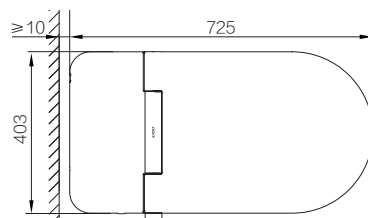
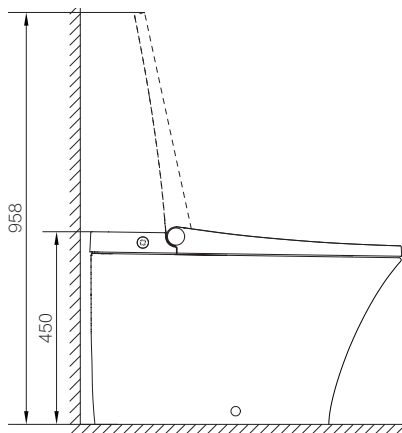


DIMENSION

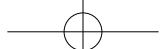
[E312-02]



[E322-02]



Unit:mm



TECHNICAL DATA

ITEM	DESCRIPTION
Nominal Voltage	220 - 240 V~, 50 Hz
Power Consumption	1050 W (Under the condition of cold water temperature $15 \pm 5^{\circ}\text{C}$ and flow rate 635 mL/min)
Max Power Consumption	1860 W
Cable Length	1.8 m
Hydrostatic Pressure Range	0.14 - 0.75 MPa
Water Temperature Range	4 - 35 $^{\circ}\text{C}$
Ambient Temperature Range	4 - 40 $^{\circ}\text{C}$
Net Weight	44 kg
IP Rating	IPX4
Nominal	≥ 0.35 L/min
Water Temperature	About 31 - 39 $^{\circ}\text{C}$, 5 levels total
Heater Power Consumption	1600 W
Shower Time	About 3 minutes each time
Spray Arm Position	5 levels total
Seat Temperature	About 29 - 37 $^{\circ}\text{C}$, 5 levels total
Antibacterial Material	Nozzle and Seat
Seat Low TEM Protection	Yes



GUARANTEE

Dear Guest:

Thank you for buying AXENT products. In case of minor malfunctions, please refer to troubleshooting of this manual. If the solutions of the troubleshooting do not resolve the issue, please contact customer support for further examination and repair.

1. Infomation:

Customer information	Name		
	Address		
	Telephone		
Dealer information	Name		
	Telephone		
Model		Serial Number	
Purchasing Date		Warranty Period	One year since the purchase date

2. Notice:

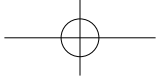
- Please fill in the guarantee card completely.
- The warranty and invoice are important evidence to help customers to enjoy the service of product maintenance. During the warranty period, in case of any malfunction, please show the warranty and invoice when the supplier or after service staffs arrive for maintenance.
- The guarantee card cannot be reissued. Please keep it properly.

3. Free maintenance regulations:

During the warranty period, any failure caused by quality problems of the product itself under normal use according to the manual and safety instruction will be provided free maintenance.

4. This warranty does not apply to the following times:

- Exceeding the warranty period.
- Valid invoices and warranty cards are not available during the warranty period.
- Damage or loss resulting from transportation, collision, etc. after purchase.
- Damage or loss resulting from abnormal use, human factors or sustained in natural calamity such as fire, earthquake, flood, thunder, electrical storm, environmental pollution, etc. Damages or loss sustained in natural calamity such as fire, earthquake, flood, thunder, electrical storm, etc.
- Damage or loss caused by the dismantle, movement, or maintenance by a non-our-company authorized maintainer.
- Damage or loss resulting from any misuse, abuse, negligence, improper care, cleaning and maintenance of the product.
- Damage or loss resulting from sediments or foreign matter contained in a water system.
- Refitted the product for second times according to the customer's request.



AXENT(Shanghai) Corporation Ltd.

Add: A, C, D Rooms, 10F, No. 9 Zhenning Road,
Changning District, Shanghai, China

Tel: +86 21 5238 7080

E-mail: service@axentbath.com www.axentbath.com

PN: 224000014900 2018/05/11